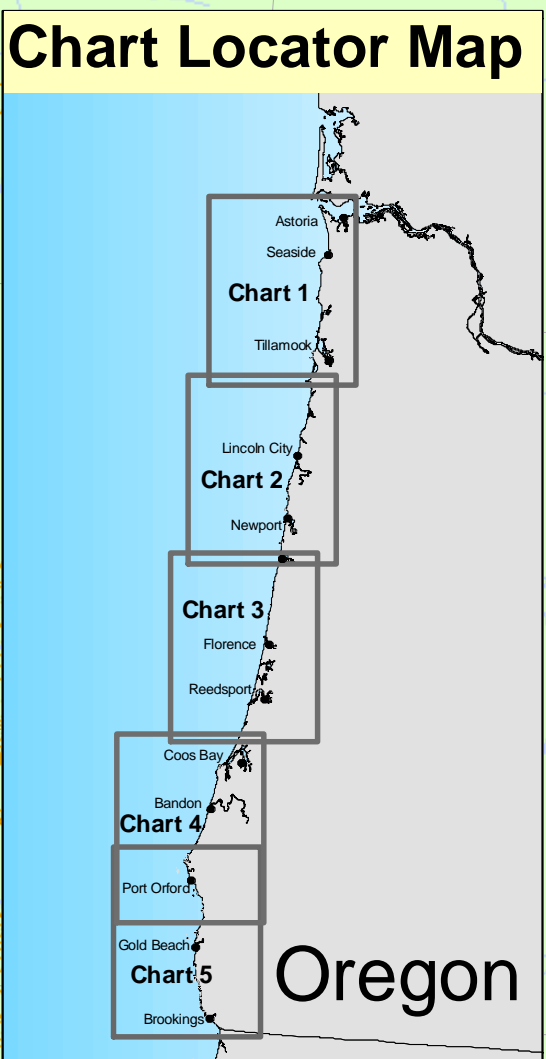
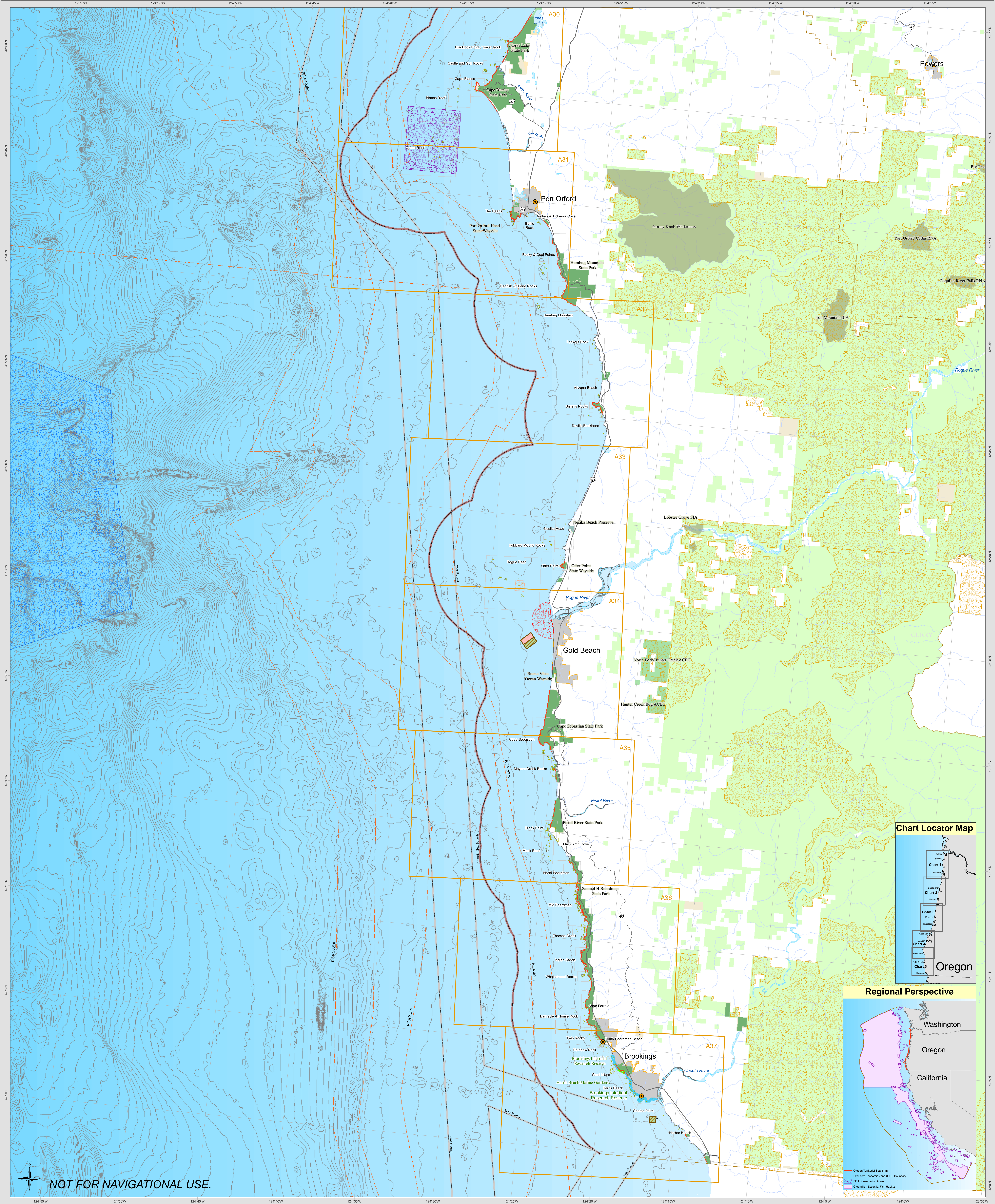


Human Use and Management Chart Series

Southernmost Coast Section of Oregon

Chart 5



Telecommunication Cables (OFCC, 2005)

Towlane Agreement (WA Sea Grant, 2007)

Permanent

Summer Only

Advisory Only

Rockfish Conservation Area (RCA) Lines*

Commercial Clam Harvest Closure

Dredge Material Disposal Site (ACOE, 2008)

Active

Inactive

Proposed

Seasonal Closure - Urchin Fishery (Stellar Sea Lion Rookery)

Seasonal Closure - All Fisheries (Stellar Sea Lion Rookery)

Closed to Commercial Fish Harvest

Wave Energy Preliminary Permit Sites (FERC, 2008)**

National Wildlife Refuges (USFWS)

Groundfish Essential Fish Habitat (EFH) Conservation Areas

Final Critical Habitat for Western Snowy Plover (USFW)

Final Critical Habitat for Marbled Murrelets (USFW, 1996)

Intertidal & Subtidal Research Reserves (ODFW)

Marine Gardens (ODFW)

Marine Habitat Refuge (ODFW)

Permitted Outfall (DEQ / DLCD)

Shipwrecks (NOAA ENC's)

Depth Contours (25m Interval)

County Boundaries

City Limits, ODOT 2007

Oregon State Parks (OPRD, 2008)

General Land Ownership

County

State

Federal

Protected Areas Ownership (Wildlife Conservation Plan)

Bureau of Land Management

Oregon Department of Forestry

Oregon Division of State Lands

The Nature Conservancy

United States Forest Service

Evaluation Proposal Map Index

Map Scale: 1:100,000

Map Projection: Albers Equal Area

Datum: NAD 1983

0 1 2 3 4 5 6 7 8 9 10

Nautical Miles

0 1.25 2.5 5 7.5 10

Kilometers

THIS MAP IS FOR GENERAL REFERENCE ONLY.

The spatial information shown in this map was obtained from a variety of sources. Care was taken in the presentation of these data, and they are provided "as is". The cartographers accept no responsibility for errors, omission, or positional accuracy in the underlying digital data. There are no warranties, expressed or implied accompanying these maps. Notification of any errors would be appreciated.

The data layers presented in these maps are a compilation of various data collections. Some of these data sets are subject to changes based upon regulatory changes, new scientific research information, and changes in policy. For detailed information about any one layer, please see the associated documentation.

* The fishing regulations associated with and defined by the RCA lines are subject to frequent changes.

** Subject to Frequent Changes

Cartography by Andy Lanier and Barb Seakins
Last Updated, July 18th, 2008

A product of the
Oregon Marine Mapping Group
Electronic copies and data available at:
www.OregonMarineReserves.net