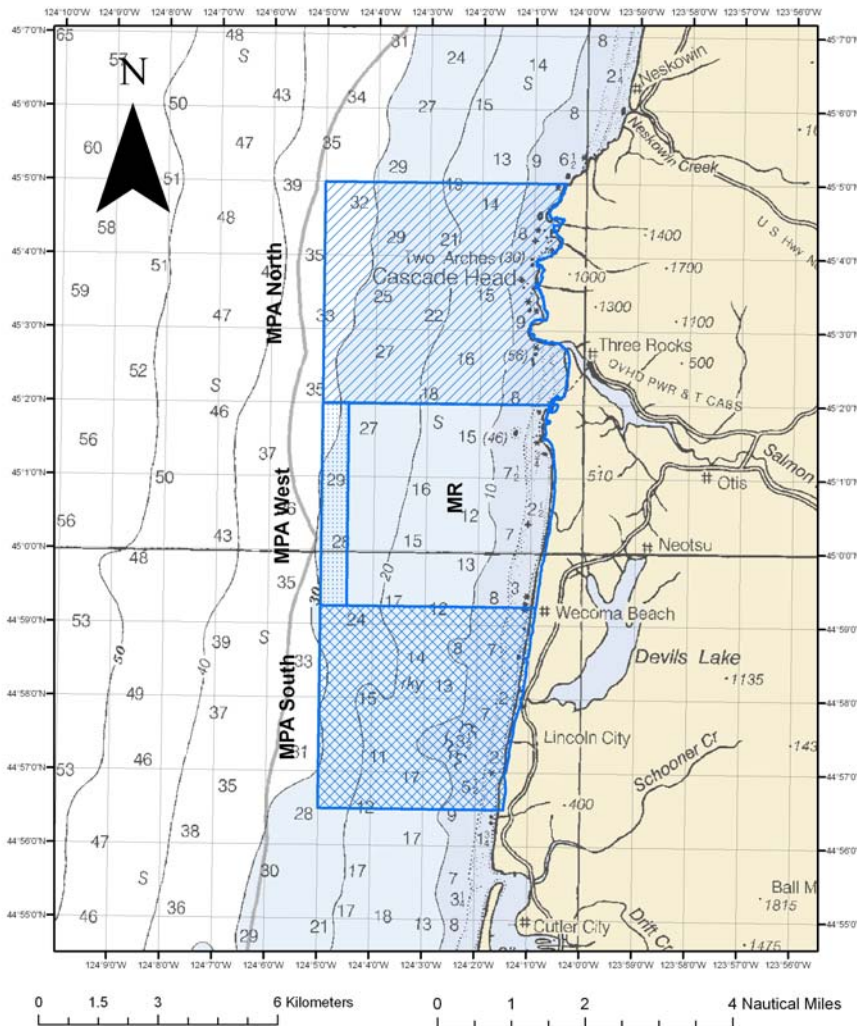


# Cascade Head Marine Reserve Recommendation



## West MPA:

Allowances: Commercial and sport crab & salmon. All other extractive activities (including new ocean development) prohibited.

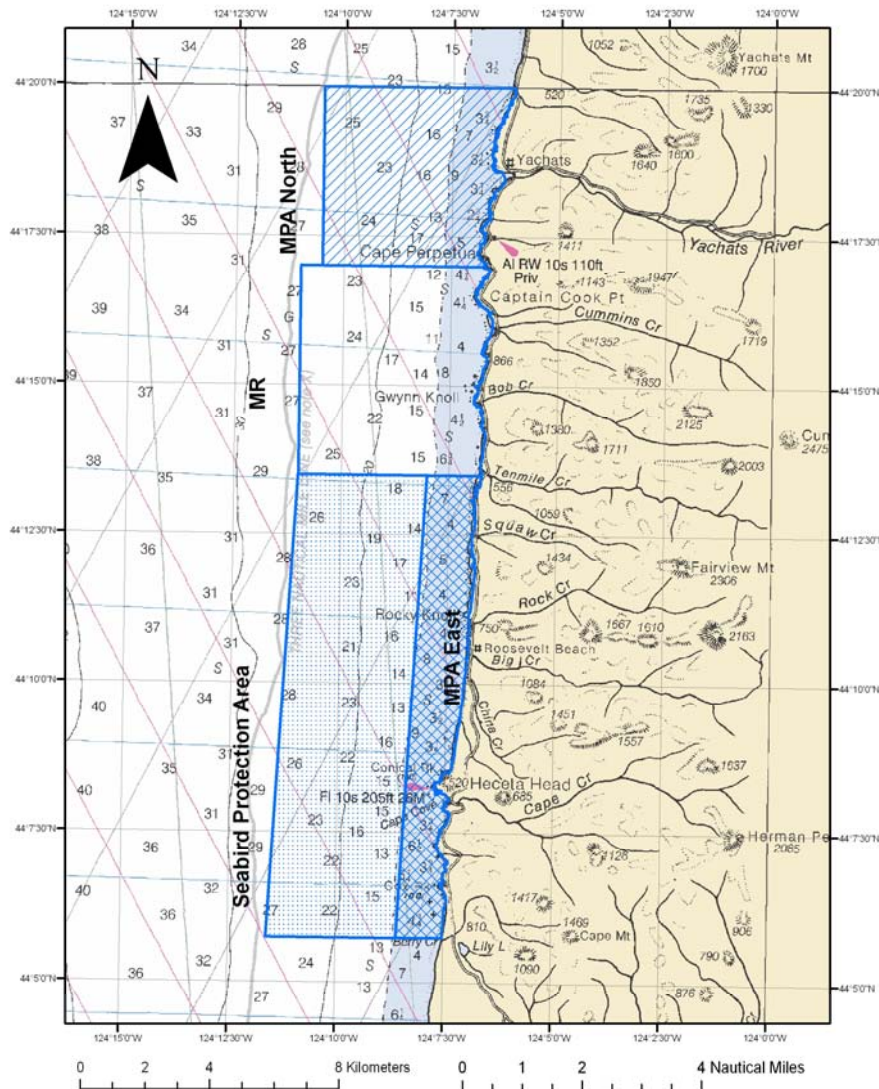
## North MPA:

Allowances: Commercial and sport crab & salmon, and sport groundfish fishing for fishermen launching out of Knight Park (Salmon River). All other extractive activities (including new ocean development) prohibited.

## South MPA:

Allowances: All activities allowed in current regulations except: trawl, nets, and new ocean development

# Cape Perpetua Marine Reserve Recommendation



## North MPA:

Allowances: Commercial and sport crab and salmon, and shoreside recreational fishing. All other extractive activities (including new ocean development) prohibited.

## South-east MPA:

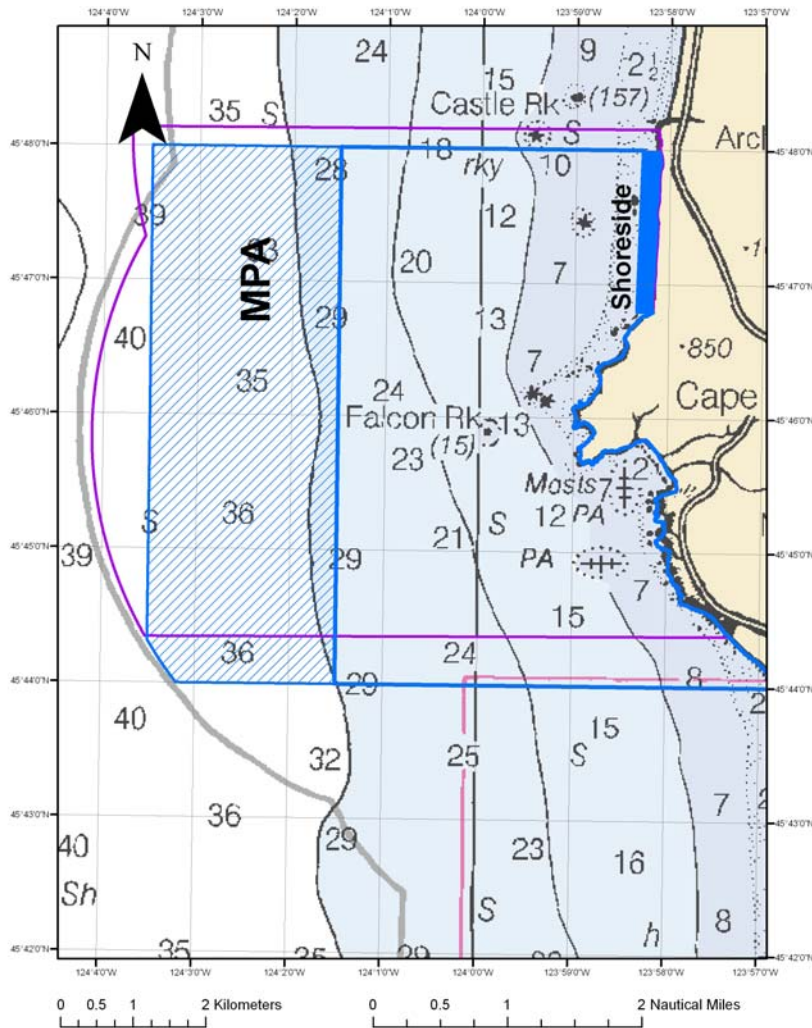
Allowances: All activities allowed in current regulations except: trawl, all forage fish fisheries, and new ocean development.

Other: Management plan developed to minimize bird disturbance.

## Seabird Protection Area (SPA):

Allowances: All activities allowed in current regulations except: forage fin fish fisheries, new ocean development

# Cape Falcon Marine Reserve Recommendation



## Shoreside MPA:

**Allowances:** Shoreside fishing for fish species and crab; assumes no harvest from water craft or diving. All other extractive activities (including rocky intertidal harvest/collection of invertebrates, algae, and natural products) prohibited.

## MPA:

**Allowances:** Commercial and sport crab & salmon. Exception: no commercial crab pots can be set in designated gravel substrate. All other extractive activities (including new ocean development) prohibited.