

Area-Based Regulations in Oregon's Marine Fisheries



The what and where in our fisheries

Oregon Department of Fish & Wildlife
Marine Resources Program
Marine Reserves Program



Area-based “spatial” regulations are used for commercial and sport fisheries

My Goal: To give a broad overview of how area-based management is applied to major fishery categories.

Regulations may be State or Federal

(I don't even try to keep it all in my head...)

Methods

- Latitude and/or longitude
- Depth
- Discrete areas
- Areas can change seasonally or as limits reached

Salmon Fisheries

- Latitudinal based regulations
 - North/South of Cape Falcon
 - North/South of Humbug Mountain
- Hotspot management
 - Columbia River Control Zone
 - State waters fisheries
- Area based mark selective fisheries
- Goal: provide opportunity while protecting stocks of concern and specific life stages
 - Such as lower Columbia natural coho and Klamath River fall chinook



Sport & Commercial Troll Salmon

2010 Oregon Ocean Sport Salmon Seasons

Statewide Restrictions: Anglers fishing for salmon and anglers fishing from boats with a salmon on board are limited to no more than 2 single point barbless hooks and no more than one lure/bait per line. It is unlawful to fish for or take and retain any legal species while possessing on board any species not allowed to be taken in that area at that time. Minimum lengths: Chinook 24", coho 16", and steelhead 20"



Leadbetter Point, WA to Cape Falcon, OR:

Selective Chinook Season:

Open June 12 through earlier of June 30 or 12,000 marked Chinook quota.

Bag Limit: All salmon except coho. Two salmon per day, all retained Chinook must have a healed adipose fin clip.

Selective Coho Season:

Open July 1 through earlier of Sept. 30 or 33,600 marked coho quota (Chinook guideline of 13,100)

Bag Limit: All salmon. Two salmon per day, but no more than one Chinook, and all coho must have a healed adipose fin clip.

Notes: Open seven days per week. Closed within the Columbia River Control Zone.

Cape Falcon to OR/CA Border:

All Salmon Except Coho Season:

Open May 29 through September 6.

Bag Limit: Two salmon, closed to retention of coho except as listed below for the "selective coho season"

Selective Coho Season:

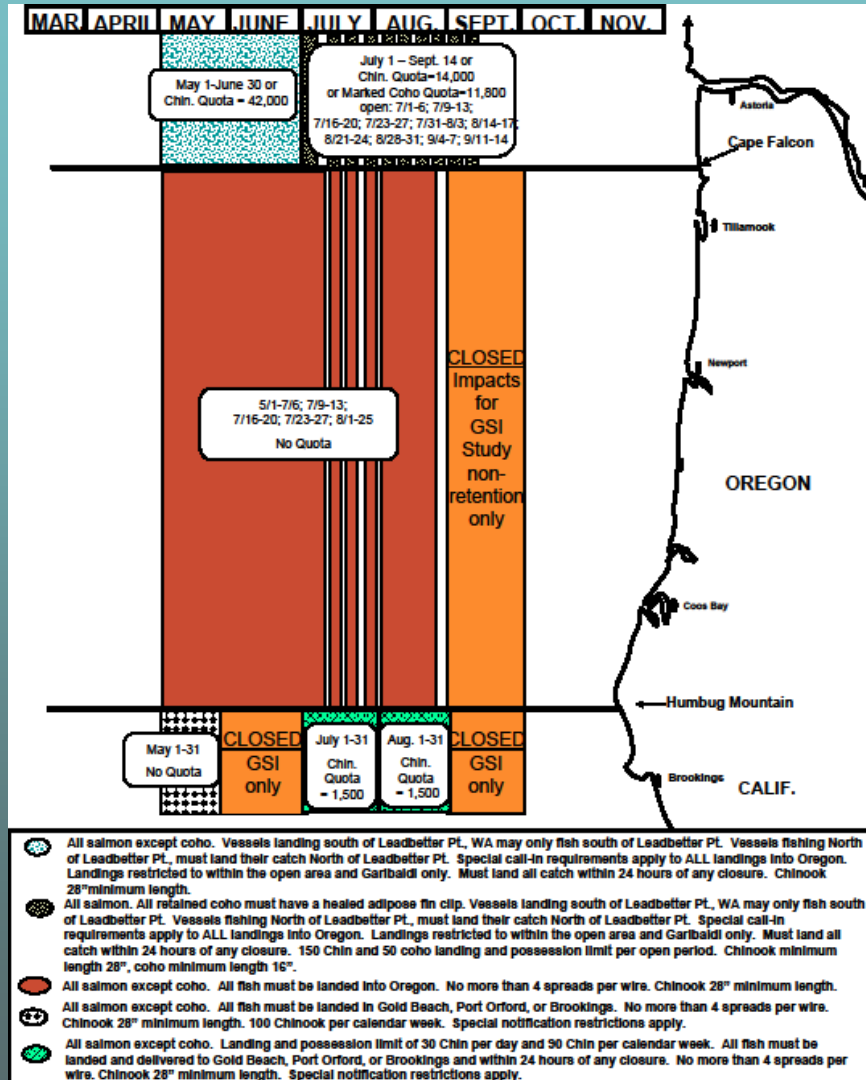
Open June 26 through earlier of Sept. 6 or 26,000 marked coho quota

Bag Limit: Two salmon, all coho must have a healed adipose fin clip

Notes: Shoreward of the 15 fathom curve off Tillamook Bay between Twin Rocks and Pyramid Rock and prior to Aug. 1, only adipose fin-clipped Chinook may be retained. Within the Stonewall Bank Yelloweye Rockfish Conservation Area salmon angling is limited to trolling only on all depth halibut days.

For more information and in-season updates:
Marine Resources Program at (541)867-4741
or visit: www.dfw.state.or.us/MRP/salmon/

5-3-2010

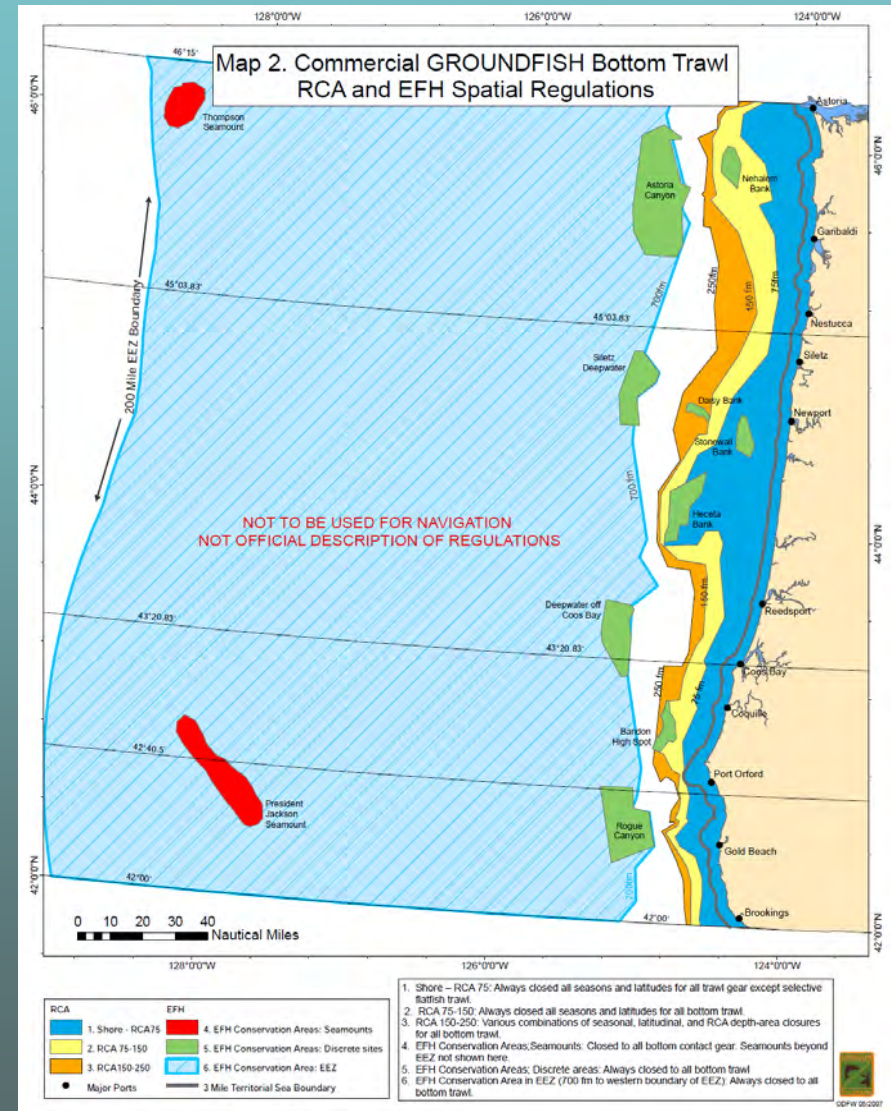


Ocean Commercial Troll Salmon Seasons Off Oregon, 2010

FINAL PFMC OPTION: 4/15/2010 - Final regulations still awaiting approval by the US Dept. of Commerce and Oregon Fish and Wildlife Commission.

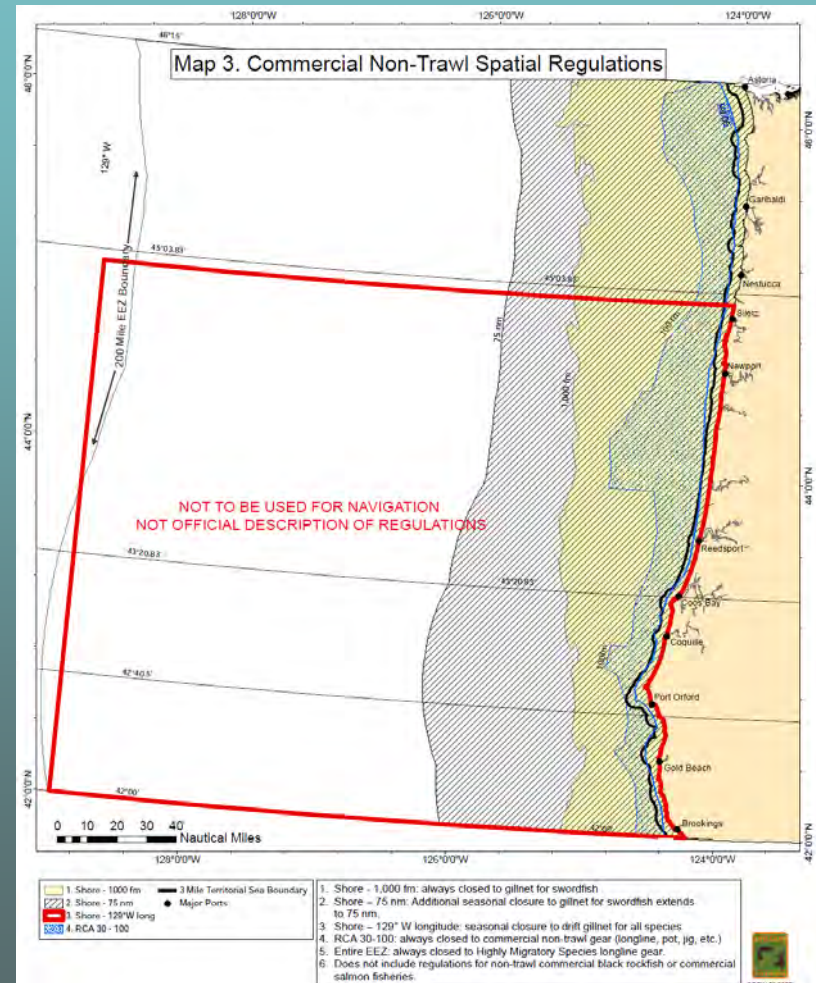
Groundfish Bottom Trawl

- Managed by depth and latitude
- Goal: protect species of concern, most notably overfished (depleted) species (*darkblotched*, *widow*, and *canary rockfishes*)
- Areas to protect essential fish habitat (EFH)
 - “those waters and substrate necessary to fish for spawning, breeding, feeding, or growth to maturity.”



Commercial Non-Trawl Groundfish Fisheries

- Managed by depth and latitude
- Goal: protect species of concern, most notably overfished (depleted) species (*Yelloweye* and *canary rockfishes*)

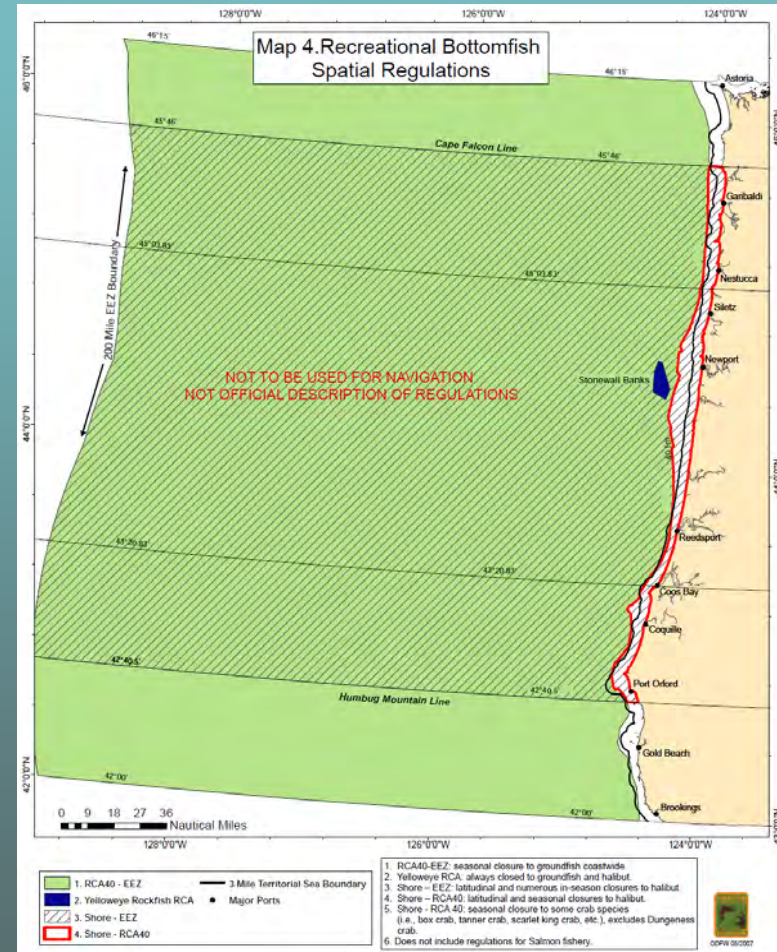


Highly Migratory Species

- Tunas, sharks, swordfish
- Managed by depth and latitude
- Goal: protect threatened/endangered species
 - Turtles
 - Whales

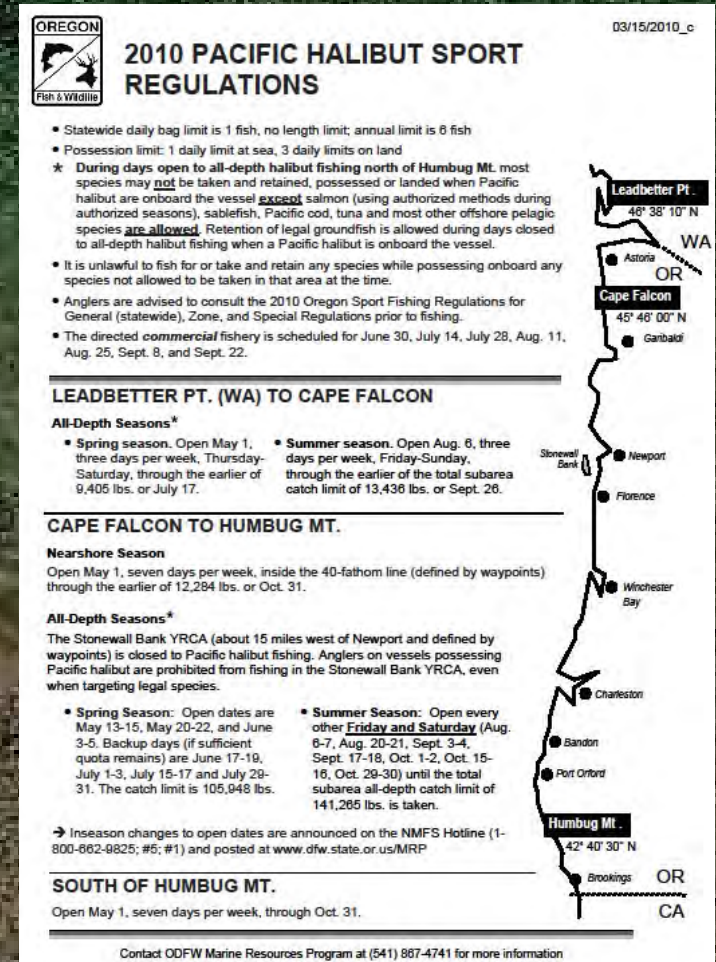
Sport Groundfish Fisheries

- Managed by depth
- Goal: protect species of concern, most notably overfished (depleted) species (*Yelloweye and canary rockfishes*)
- Yelloweye Rockfish Conservation Area
 - Stonewall Banks
 - Halibut and groundfish fishing restricted; all others allowed



Pacific Halibut Fisheries

- Sport
 - Managed by depth and latitude
 - Goal: provide opportunity within allocations structured by depth and latitude
 - North and south of Cape Falcon
 - Inside and outside of 40-fathoms
- Commercial
 - Managed by depth
 - Goal: protect species of concern most notably overfished (depleted) species (*Yelloweye* and *canary rockfishes*)

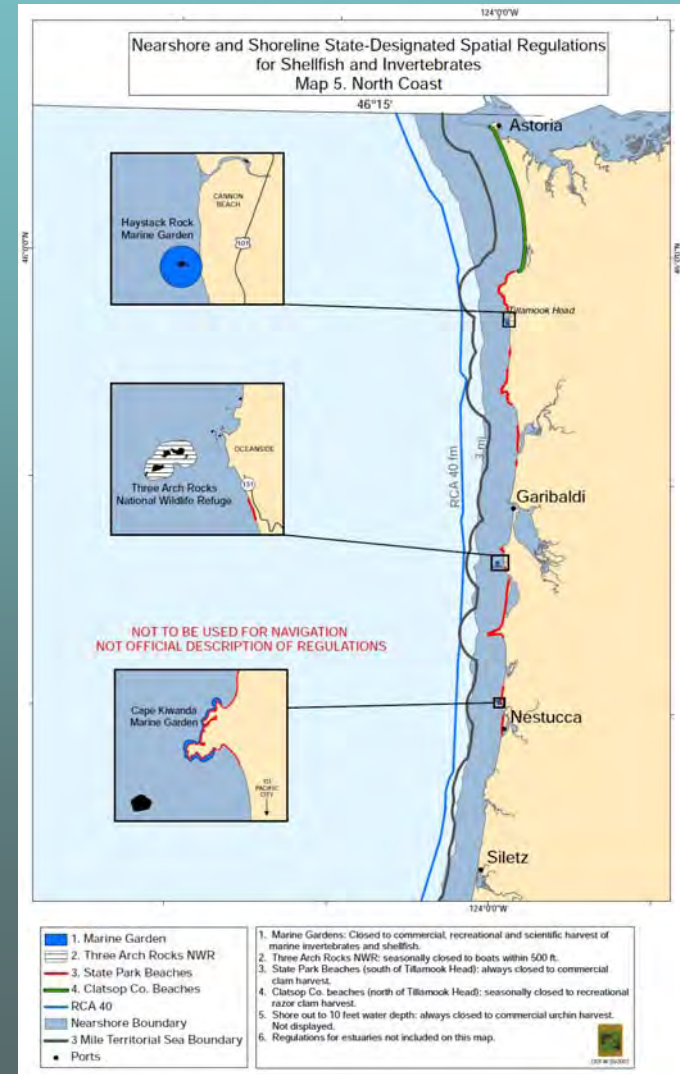


Commercial Ocean Crab Fisheries

- Dungeness crab
 - Managed by latitude
 - Goal: Provide opportunity while protecting molting stocks
- Other crab fisheries (*box crab, tanner crab*)
 - Managed by depth
 - Goal: Limit conflicts with Dungeness crab fishery regulations

Currently Restricted Shoreline Areas – North Coast

- Marine Gardens
 - Haystack Rock
 - Cape Kiwanda
- National Wildlife Reserves
 - Three Arch Rocks



Questions?



Currently Restricted Shoreline Areas – Central Coast

- Marine Gardens
 - Otter Rock
 - Yaquina Head
 - Yachats
 - Cape Perpetua
- Habitat Refuges
 - Whale Cove (*closed to all take*)
- Research Reserves
 - Boiler Bay
 - Pirate Cove
 - Neptune State Park

