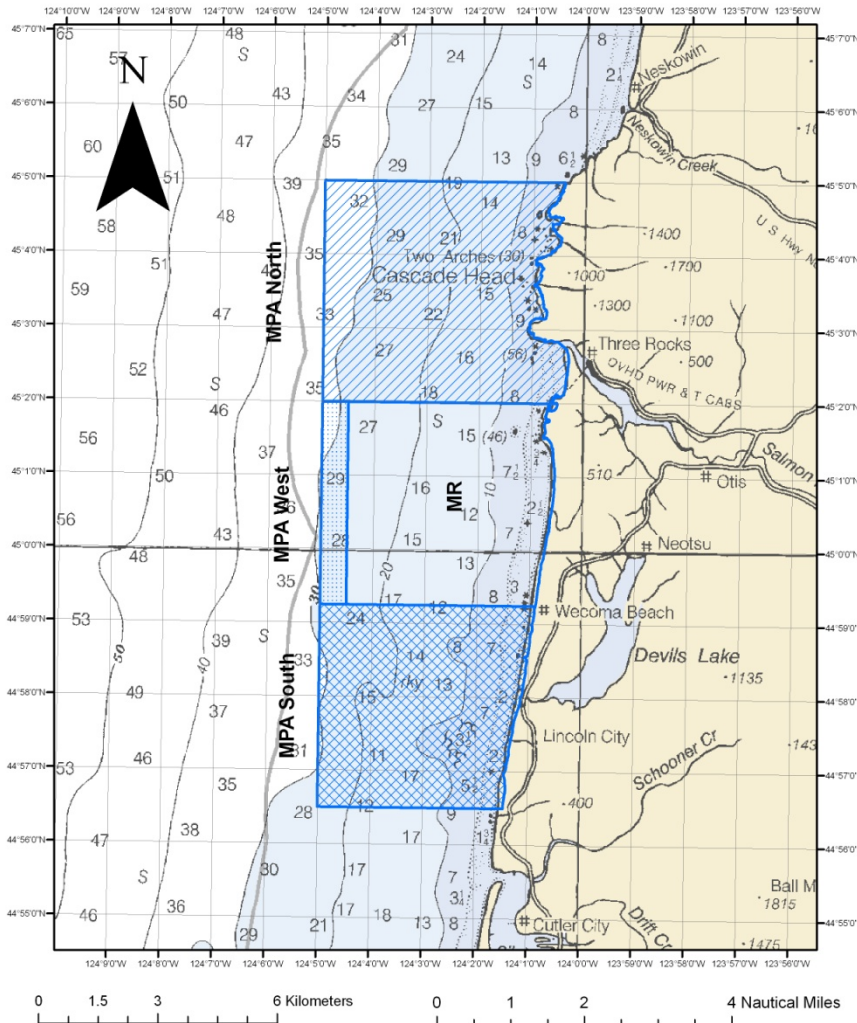


Cascade Head Marine Reserve

* Prohibitions will go into effect after baseline data collection



West MPA:

Allowances: Commercial and sport crab & salmon. All other extractive activities (including new ocean development) prohibited.

North MPA:

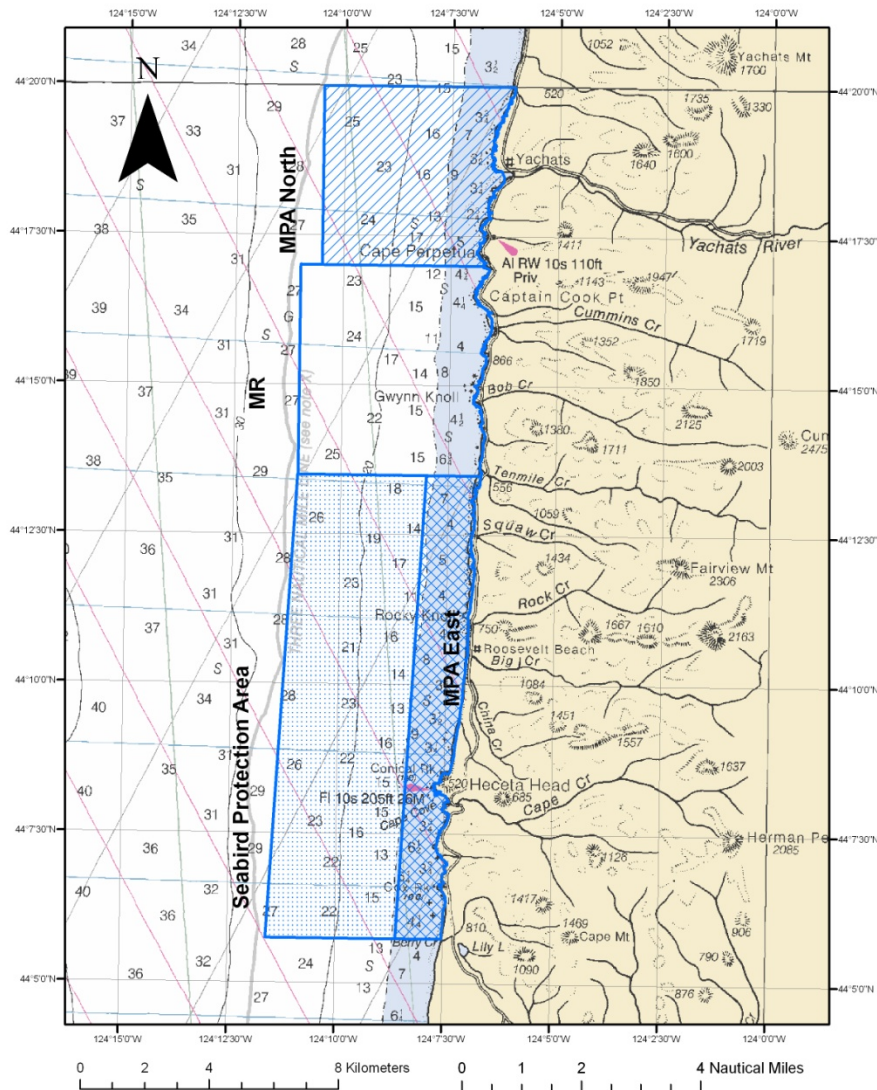
Allowances: Commercial and sport crab & salmon, and sport groundfish fishing for fishermen launching out of Knight Park (Salmon River). All other extractive activities (including new ocean development) prohibited.

South MPA:

Allowances: All activities allowed in current regulations except: trawl, nets, and new ocean development

Cape Perpetua Marine Reserve

* Prohibitions will go into effect after baseline data collection



North MPA:

Allowances: Commercial and sport crab and salmon, and shoreside recreational fishing. All other extractive activities (including new ocean development) prohibited.

South-east MPA:

Allowances: All activities allowed in current regulations except: trawl, all forage fish fisheries, and new ocean development.

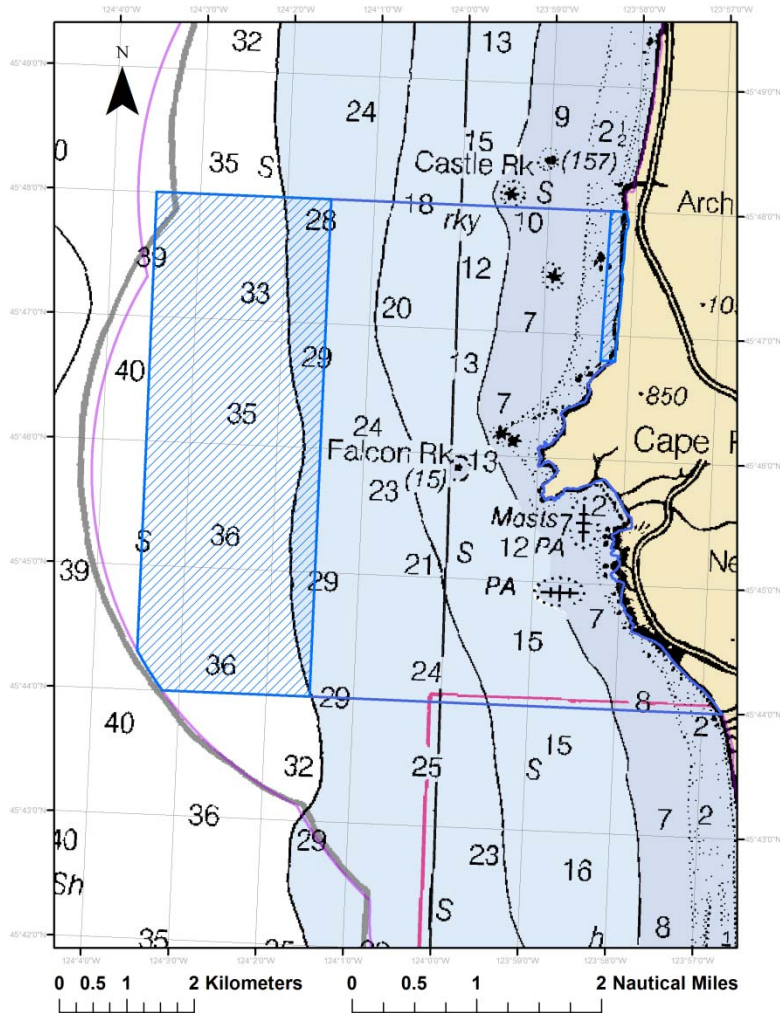
Other: Management plan developed to minimize bird disturbance.

Seabird Protection Area (SPA):

Allowances: All activities allowed in current regulations except: forage fin fish fisheries, new ocean development

Cape Falcon Marine Reserve

* Prohibitions will go into effect after baseline data collection



Shoreside MPA:

Allowances: Shoreside fishing for fish species and crab; assumes no harvest from water craft or diving. All other extractive activities (including rocky intertidal harvest/collection of invertebrates, algae, and natural products) prohibited.

MPA:

Allowances: Commercial and sport crab & salmon. Exception: no commercial crab pots can be set in designated gravel substrate. All other extractive activities (including new ocean development) prohibited.