

# Nearshore Research Inventory Project

Oregon Department of Land Conservation and Development,  
Coastal Management Program

Kate Sherman, College of Oceanic and Atmospheric Science, Oregon State University  
Andy Lanier, Department of Land Conservation and Development  
Tanya Haddad, Department of Land Conservation and Development





# Nearshore Research Inventory Project

- **Purpose:** to show the geographic scope of research in the nearshore environment off the coast of Oregon.
  - Incorporate collected information into the marine spatial planning process in Oregon.
- **Outcome:** an inventory and a map of the current and future use of Oregon's nearshore environment by the research community.



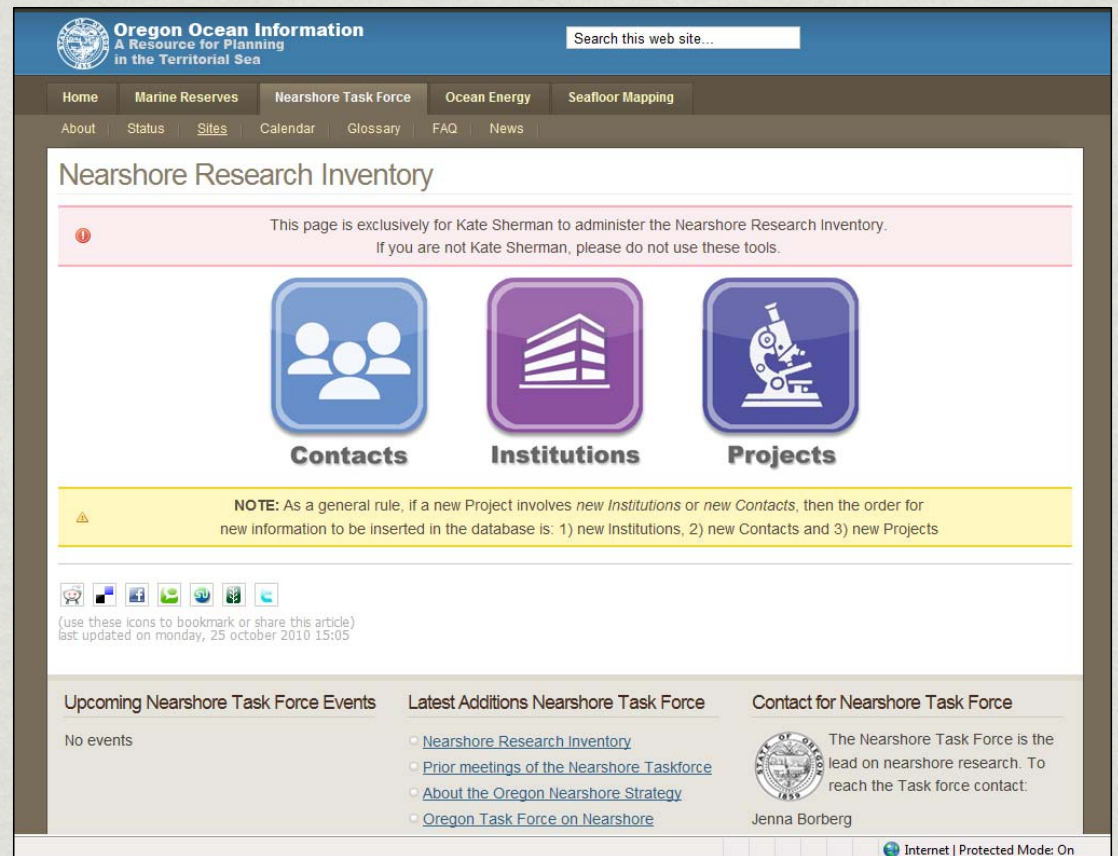
# Methods

- Developed a contact list and survey questions.
- Conducted Informational Interviews.
- Compiled internet based resources.
- Developed an online data entry tool.
- Approved by Institutional Review Board (OSU).



# Methods

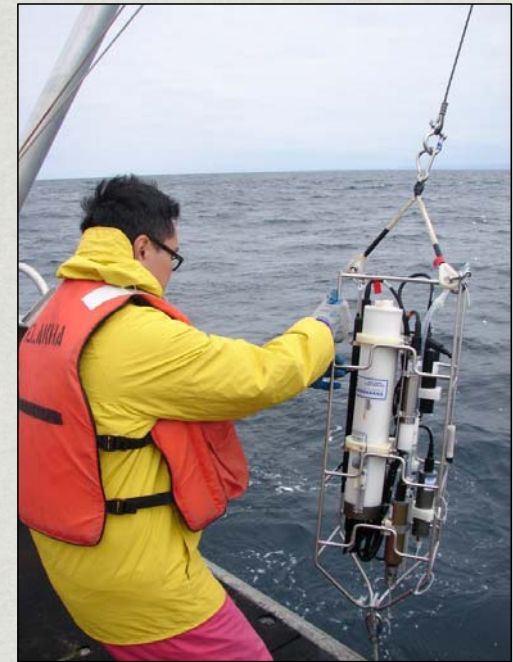
- Outreach to researchers.
- Scoping interviews.
- Formal interviews.
- Data compilation.
- Data validation.
- Data Display.





# Results

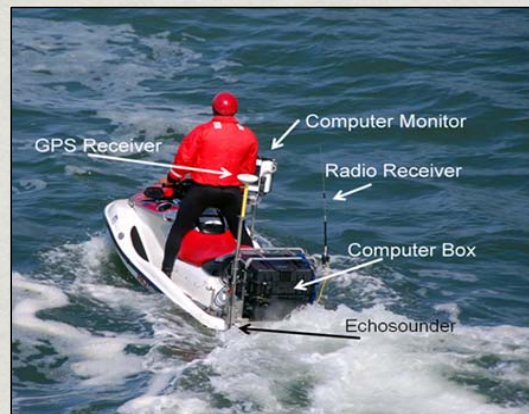
- 43 scoping interviews conducted
- 15 formal interviews
- 30 projects documented



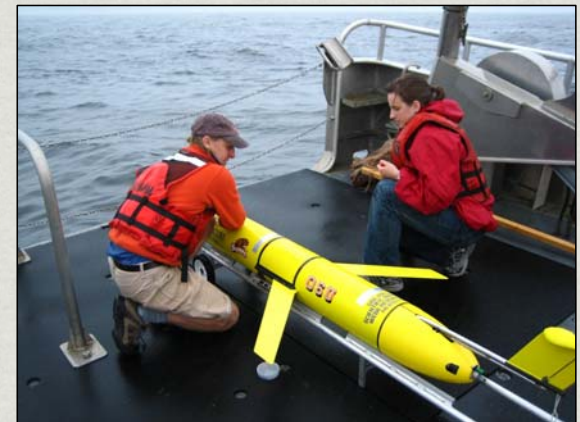
CTD Cast



Elahka, OSU Research Vessel



Nearshore Bathymetry Mapping



Oregon State University Glider



# Definitions

- **Nearshore** - shoreline up to the shelf break
- **Point** – a research platform (ie. Buoy)
- **Station** – a sampling location (ie. CTD cast)
- **Line** – a line where samples are taken (ie. Newport line)
- **Transect** – a line where samples are continuously taken (ie. Glider)

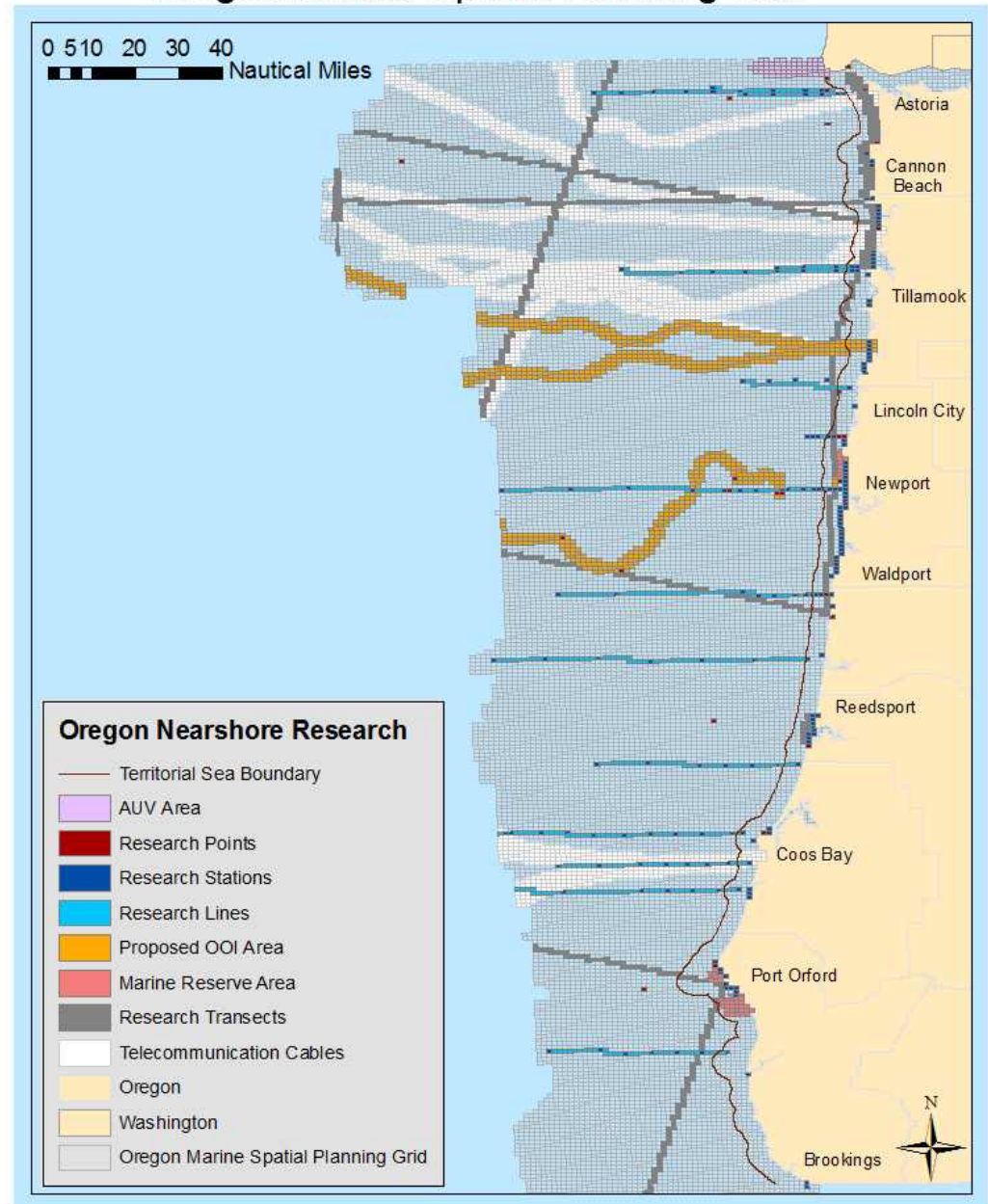


National Data Buoy Center Buoy 46050



14% of the Oregon  
marine spatial  
planning grid has  
research conducted  
within it

## Oregon's Nearshore Research Inventory Project Oregon Marine Spatial Planning Grid



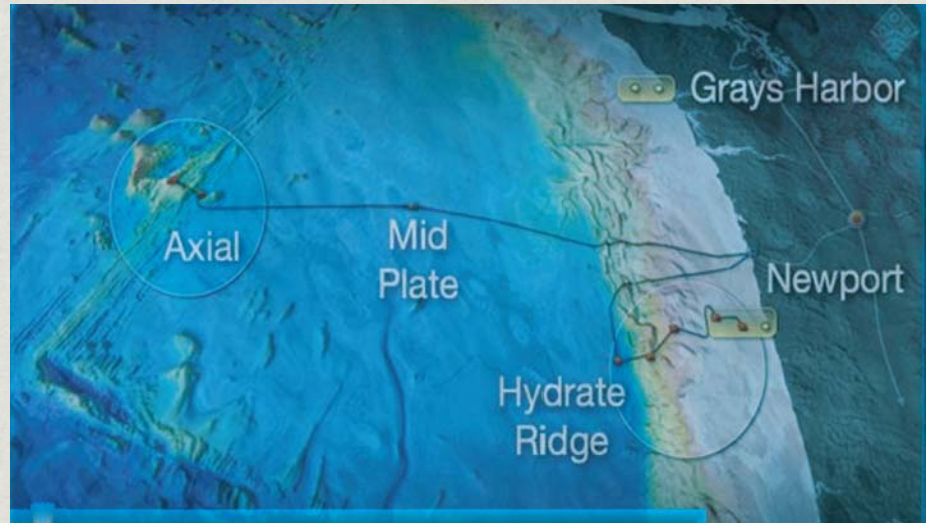
Map by: Kate Sherman, Oregon Department of Land Conservation and Development



# Results

## Permanent Research Platforms

- 41 buoys / land stations
- 12 cables
- 5 glider lines



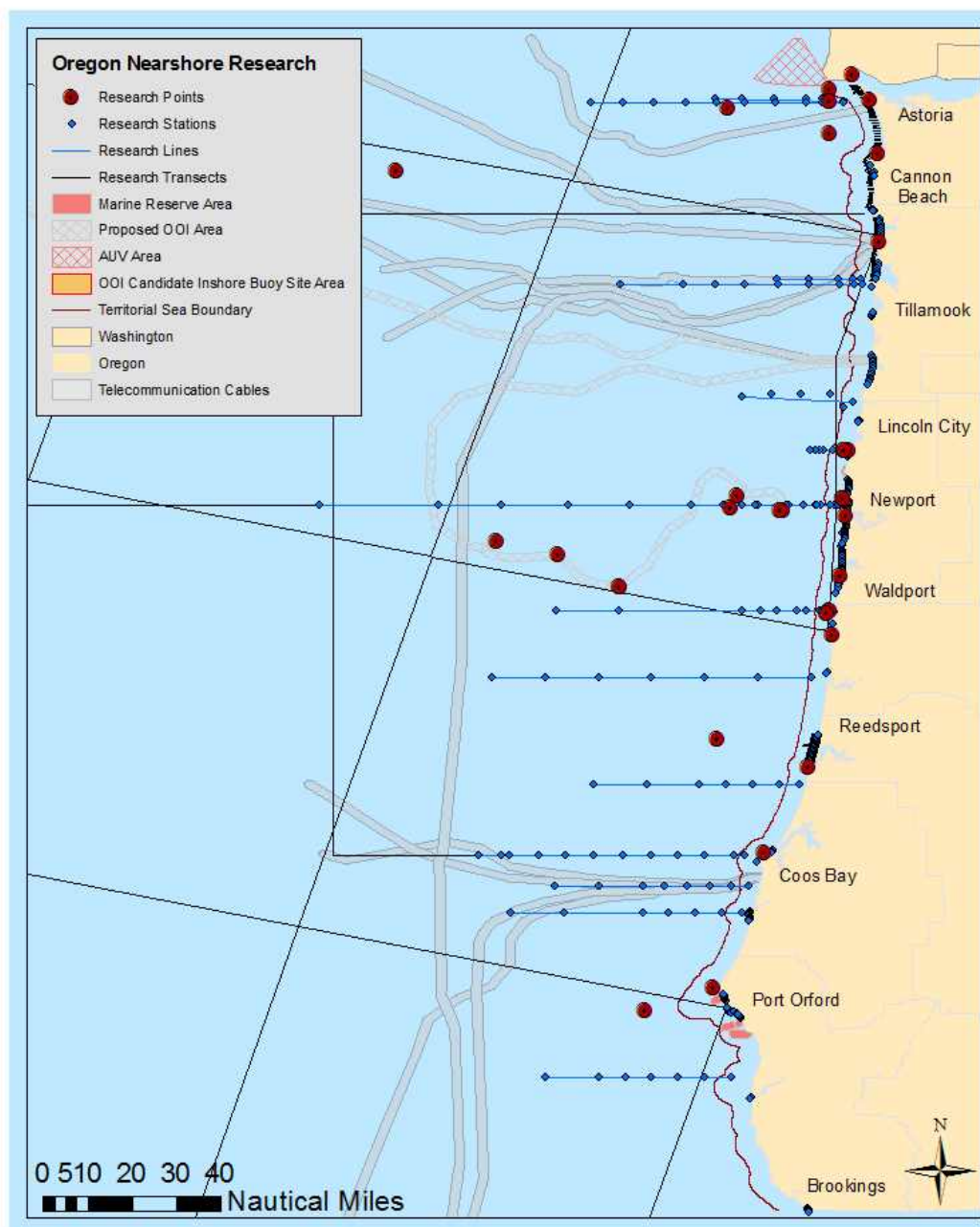
Proposed Ocean Observatories Initiative Endurance Array

## Research Stations

- 281 shore sampling stations
- 253 nearshore bathymetric transects
- 116 nearshore sampling stations
- 41 transect lines
- 12 cruise sampling lines
- 12 intertidal sampling stations
- 1 AUV area



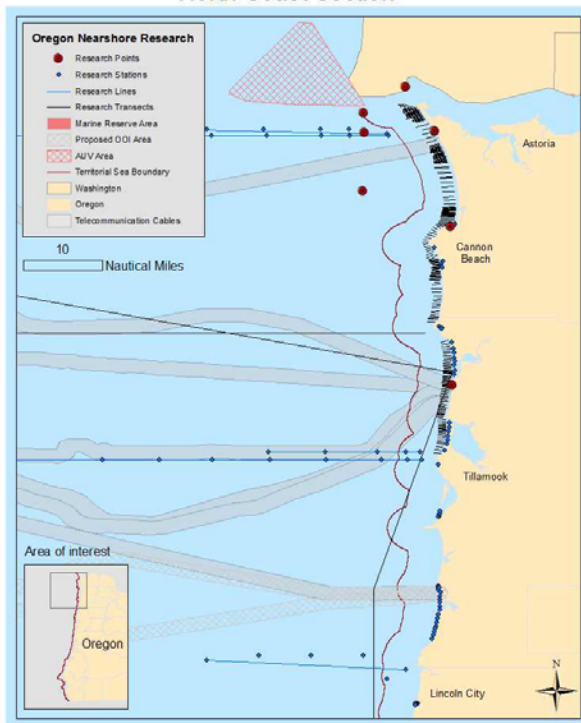
## Oregon's Nearshore Research Inventory Project



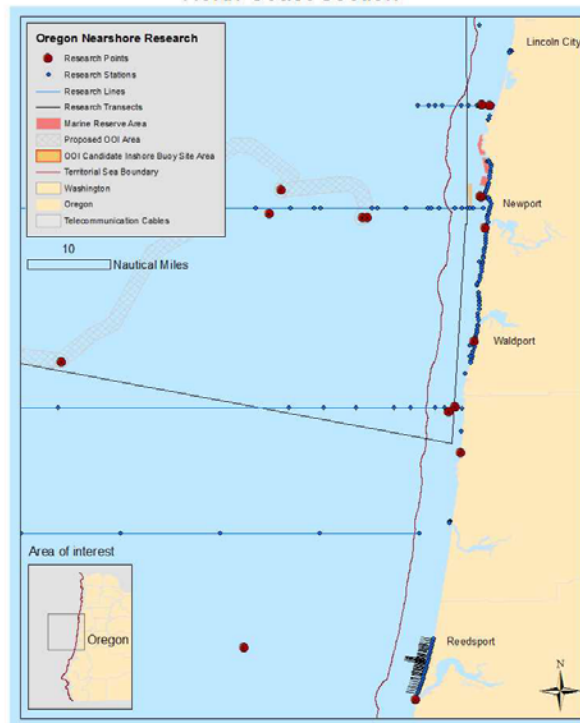
Map by: Kate Sherman, Oregon Department of Land Conservation and Development



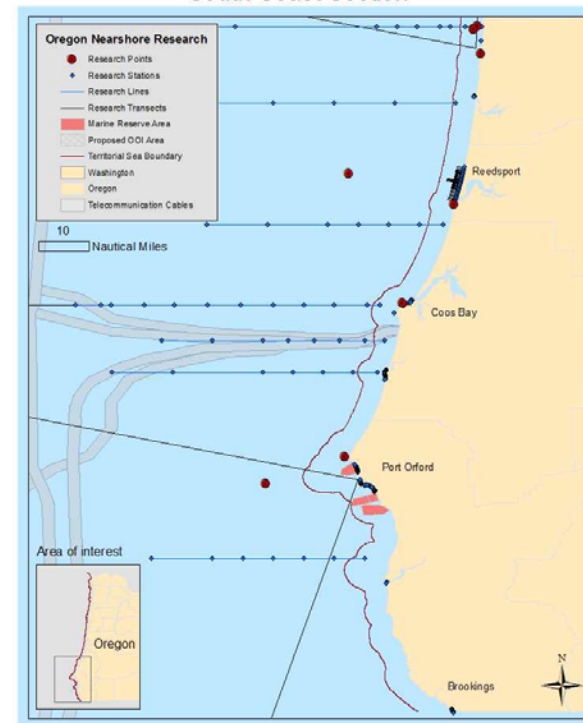
### Oregon's Nearshore Research Inventory Project: North Coast Section



### Oregon's Nearshore Research Inventory Project: North Coast Section



### Oregon's Nearshore Research Inventory Project: South Coast Section





# Results

- Research is conducted along much of the Oregon coast, but there are hot spots for research.
- Research is focused outside of river mouths.
- Areas around Newport have the majority of research projects.
- All of the participants said that understanding the geographic footprint of research in Oregon is important for planning.



## Contact Information:

Kate Sherman

Student Professional/Technical Worker

Oregon Department of Land Conservation and Development

M.S. candidate, Marine Resource Management

College of Oceanic Atmospheric Sciences, Oregon State University

Email: [katherine.j.sherman@state.or.us](mailto:katherine.j.sherman@state.or.us)