



# FAQ

## Rocky Shores Management Strategy Update

May 2018

VISIT [WWW.OREGONOCEAN.INFO](http://WWW.OREGONOCEAN.INFO) FOR MORE INFORMATION

## Managing Oregon's Rocky Coast

This document contains frequently asked questions and concerns surrounding the current Rocky Shores Management Strategy update process. If you do not see an answer to your question please email [Andy.Lanier@state.or.us](mailto:Andy.Lanier@state.or.us) for assistance.

### What is the Rocky Shore?

Rocky shores consist of natural coastal rocky habitat. This includes headlands, tide pools, rocky beaches, and cliffs, as well as offshore rocks. Jetties, other manmade features, and sandy beaches are not included as rocky shores in the rocky shores management plan.



### What is the Rocky Shores Management Strategy?

Also referred to as Part 3 of the Territorial Sea Plan, the Rocky Shores Management Strategy is the policy framework used to manage Oregon's rocky coastal habitats.

### Why Update the Strategy?

The plan was first adopted in 1994, with little alteration since that time. Some of the information used to create management recommendations is now outdated, or additional ecological and human use data is now available. Using this up-to-date information, management agencies can better support and sustain rocky habitat and the use of its resources.



### What's so special about the Rocky Shore?

Rocky habitats make up 41% of Oregon's 362 mile coastline. These rocky shores are both culturally and biologically important, attracting millions of visits annually from beachgoers hoping to catch a glimpse of ocean life.

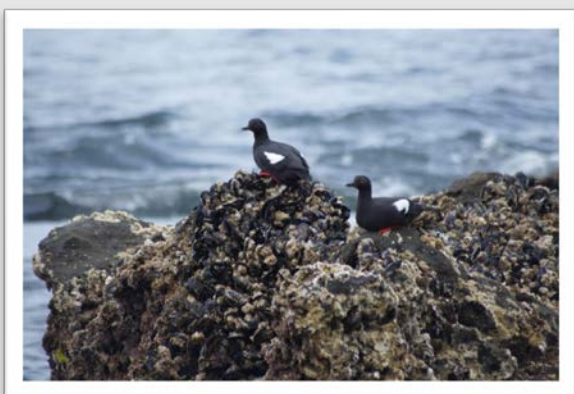
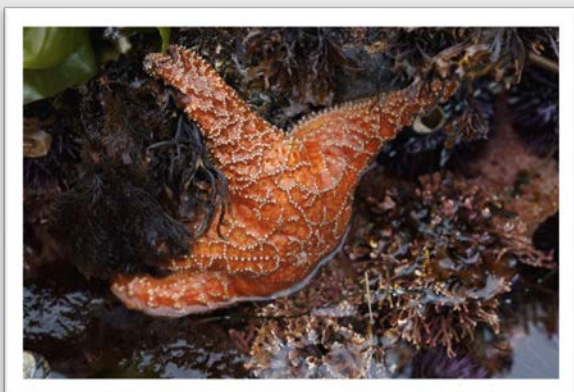


### Learn More!

Learn more about this update by visiting -

[www.OregonOcean.info/RockyShores](http://www.OregonOcean.info/RockyShores)

# Get Involved!



The State of Oregon invites all individuals, organizations, and governments to participate in this process so that all voices are heard! This update is an effort to gain understanding and evaluate the usefulness of these management designations into the future.

---

## Haven't Submitted a Comment Yet?

Although the official public comment period closed April 30<sup>th</sup>, 2018, there are still plenty of ways to get involved in this update!

- **Email** comments to [TSPComments@state.or.us](mailto:TSPComments@state.or.us)
- **Educate** your friends, family, organizations on the update
- **Attend** a Rocky Shores Working Group Meeting
- **Contact** your working group interest representative.

Find materials and information at [www.OregonOcean.info](http://www.OregonOcean.info)

## Are you a Researcher of Citizen Scientist?

Help inform this update with data on rocky shore ecology and/or human use. More information on this data call can be found at [www.OregonOcean.info](http://www.OregonOcean.info)

## Stay Updated

There will be multiple phases of public scoping throughout this process. Visit [www.OregonOcean.info](http://www.OregonOcean.info) for helpful tools, meeting schedules, and working group contacts.

---

## Contact Information

Please don't hesitate to contact Andy Lanier at the Department of Land Conservation and Development (DLCD) with additional questions or comments regarding the Rocky Shores Management Strategy Update.

Email: [Andy.Lanier@state.or.us](mailto:Andy.Lanier@state.or.us)

Phone: (503) 934-0072

[www.OregonOcean.info/RockyShores](http://www.OregonOcean.info/RockyShores)