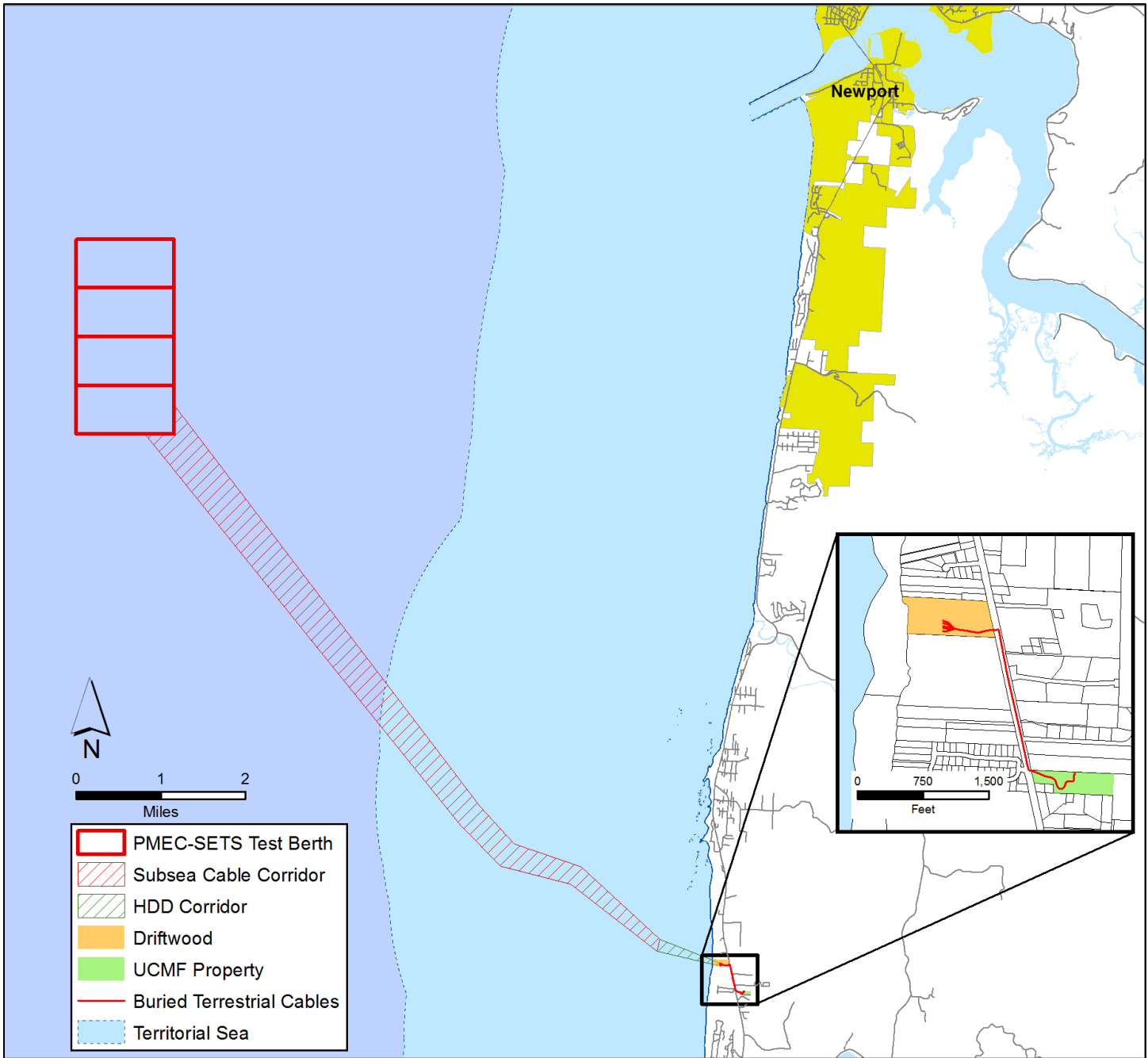


Pacific Marine Energy Center South Energy Test Site (PMEC-SETS)

Oregon State University (OSU) recently filed a draft license application with the Federal Energy Regulatory Commission (FERC) to authorize the construction and operation of the proposed Pacific Marine Energy Center South Energy Test Site (PMEC-SETS), a grid-connected, wave energy test facility. The Project would be located in the Pacific Ocean, approximately 6 nautical miles off the coast of Newport, Oregon on the Outer Continental Shelf (OCS) and would occupy an area of approximately 2 square nautical miles (1,695 acres). The Project would support the testing of up to 20 commercial-scale wave energy converters (WECs) and transfer power to a grid connection point with the Central Lincoln People’s Utility District (CLPUD) in Lincoln County, Oregon. OSU is seeking a 25-year FERC license authorizing construction and operation of the PMEC-SETS project with an installed capacity not to exceed 20 MW at any time under the FERC license term.



Locations of PMEC-SETS test berths, subsea cable corridor, HDD corridor, cable landing site, Utility Connection & Monitoring Facility and buried terrestrial cable route.